

AquaValve

Next Generation AMI.

AquaValve delivers best- in-class performance with:

- Twice the battery capacity standard
- Six times the battery capacity option
- Best signal range in industry
- Compatible with all meters
- Superior ruggedness

Plus, seamless integration into AquaHawk, the time tested, market leading analytics and customer engagement portal.

PRODUCT

The AquaValve AMX™ 1001A LTE-M Water Valve provides a water utility the capability to inexpensively, securely, and remotely manage a customer's connection to the water supply.

Pre-pay and past due customers can quickly select the Payment button on their smart phone after being notified by AquaHawk of a low or past due balance. The valve can be fully or partially closed (if desired) on a zero balance or past due situation and water can be automatically turned on shortly after a payment clears.

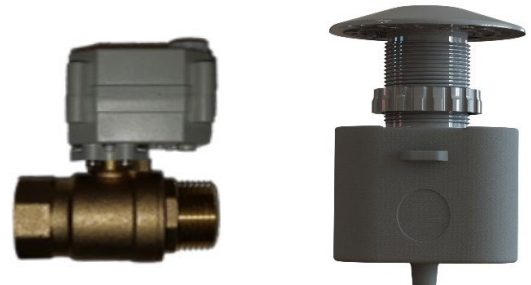
Allow customers to remotely shut off or turn on water using their mobile device or computer.

The AquaHawk Meter Management System (MMS) and AquaHawk Customer Engagement and Utility Portal are seamlessly integrated providing self-service customer access and simultaneous utility management and control. AquaHawk delivers industry leading insight into and management of all aspects of the meter to cash and meter

management process including: Customer Self-Service, Utility Customer Service, Field Work Order Dispatch and Completion, Paperless and Print-Mail Statements, Online Payments, Non-Revenue Water, Geographic Mapping and Visualization, Threshold and Leak Alert Notification, and Utility Billing.

DEPLOYMENT

The endpoint is easily installed with a meter in the standard 7.5" lay length for a ¾" pipe size (additional pipe/valve sizes can be provided). The AquaHawk AMX Air-Tight composite enclosure supports indoor, outdoor (wall or pole mount), and pit lid installations.



SPECIFICATIONS

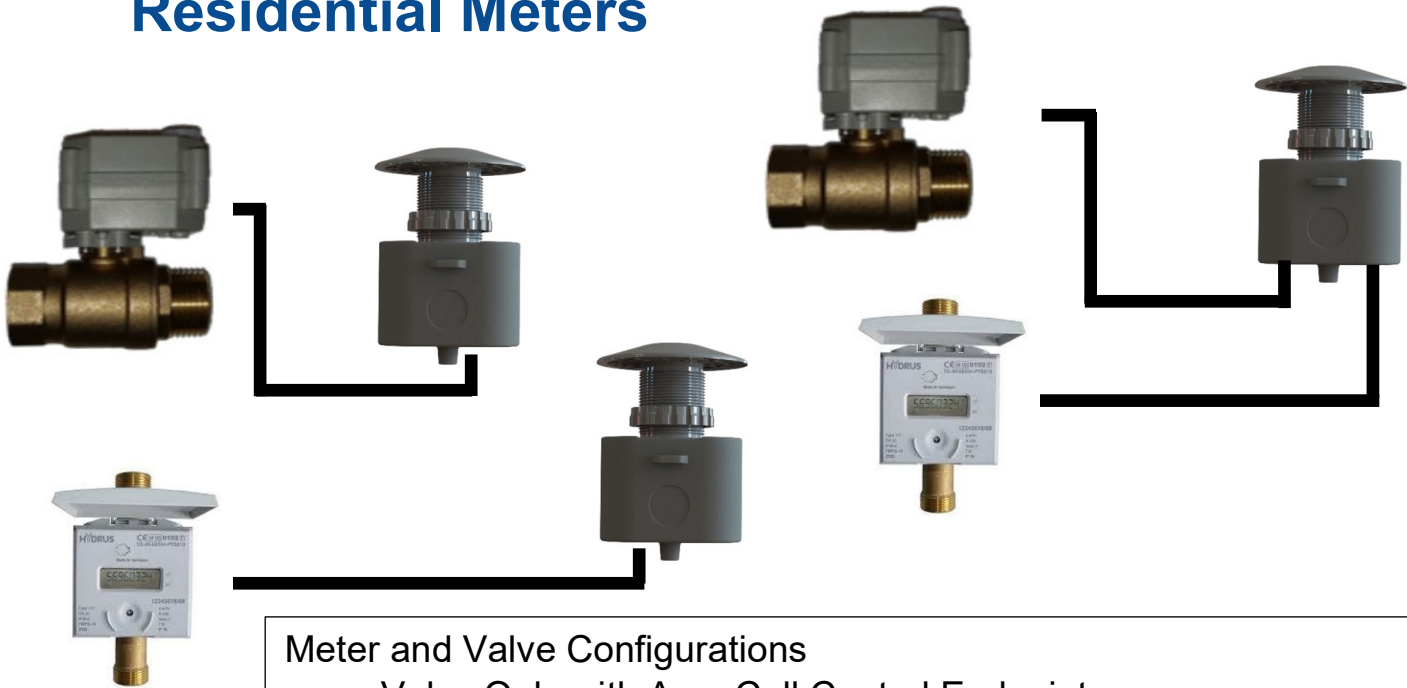
- Dimensions: 2" x 3" x 4"
- Temp Range: -40 to 70 C
- Humidity: 0-100% condensing
- Batteries: 2 D cell Lithium thionyl chloride
- Extended Battery Pack (optional)
- Open – Closed – Partial
- Compatible with All meter brands
- Security exceeds military grade encryption.
- Seamlessly Integrated with AquaHawk
- Remote Firmware upgrade
- LTE-M Cellular Network Standard
- Ethernet/WiFi Network is Option

AquaHawk

AquaCell AMX

Cellular AMI • Customer Engagement • System Analytics
Customer Alerts • Customer Portal

Remote Shut-off for Residential Meters



Meter and Valve Configurations

- Valve Only with AquaCell Control Endpoint
- Meter Only with AquaCell Endpoint
- Meter and Valve together with AquaCell Endpoint – One connection to Valve and Nicor connection to Meter



Easy to Install with 7-1/2" standard
5/8" x 3/4" and 3/4" lay length

AquaCell AMX 100A LTE-M Water Valve gives the utility the capability to remotely control the water for leaks, breaks, slow-pay customers and securely and remotely manage the customer's connection to your water supply.

AquaHawk's Customer Engagement Solution provides all the data to show positions and control valves in the field.

Remote Disconnect

Toggle meter valves between open, partially open, and closed.

Meter 10101011 Closed

Meter 10101011 Partial

Ro...	*Account	*Meter	*Name	Remote Disconnect Status
1	101010-000	10101011	WHEATON, JOSH	Open
2	202020-000	20202011	RADISSON, JEFFREY	Open
3	202020-000	20202021	RADISSON, JEFFREY	Partial
4	202020-000	20202031	RADISSON, JEFFREY	Closed